

SMART M.A.P. 2050 LRTP

Mobility. Accessibility. Prosperity.



MIAMI-DADE TRANSPORTATION PLANNING ORGANIZATION

LONG RANGE TRANSPORTATION PLAN

Rules of the Road

- This virtual workshop is being recorded.
- All attendees will remain muted throughout the workshop.
- Attendees can submit any questions/comments using the Zoom Webinar chat feature throughout the workshop.
- If you experience technical difficulties, please contact 1-800-418-0524 so that a technical support team member can assist you.

SMART M.A.P. 2050 LRTP Pop-Up Outreach Event

Miami Dade College, Medical Campus
Public Safety Day Event



Today's Conversation Roadmap



Franchesca Taylor, AICP



Christopher Rosenberg

Today's Conversation Roadmap

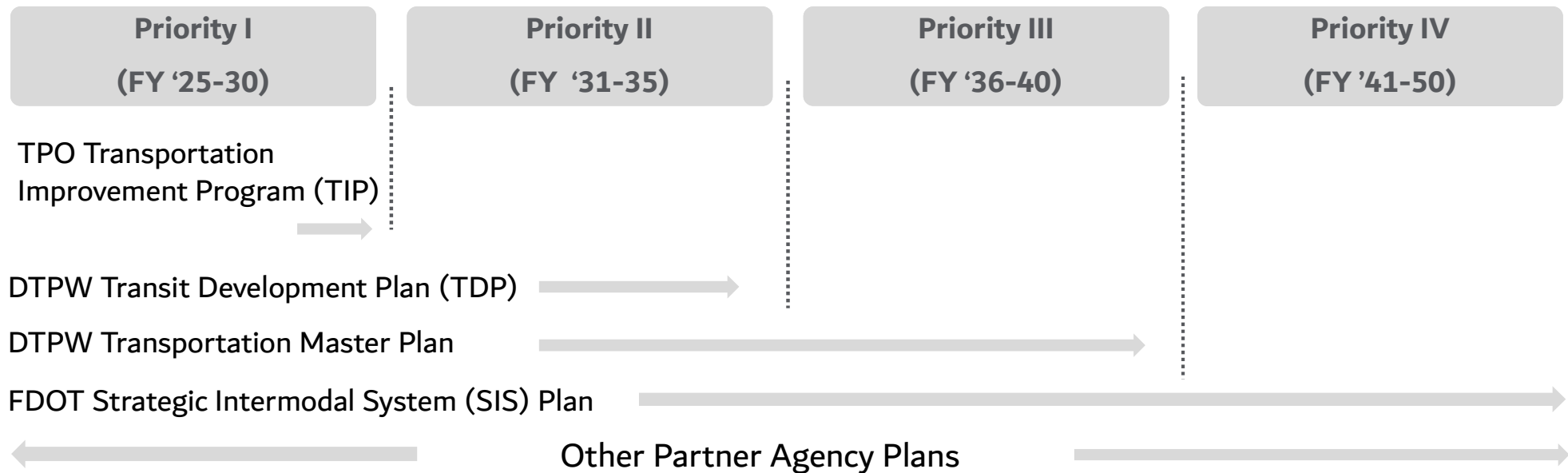


- 📍 What is the Long Range Transportation Plan?
- 📍 Goals & Objectives Development
- 📍 Congestion Management
- 📍 Need Planning
- 📍 Scenario Planning
- 📍 How do we stay involved in this process?
- 📍 Final Question & Closing Remarks

What is the LRTP?

- Federally mandated for Metropolitan Planning Organizations (MPOs) with populations of >50K residents
- Minimum 20-year horizon, updated every 5-years
- Performance – Driven & Outcome-Based

2050 LRTP Cost Feasible Plan



2050 LRTP PHASES & OBJECTIVES



PERFORMANCE

Goals & Objectives



MIAMI-DADE TRANSPORTATION PLANNING ORGANIZATION

LONG RANGE TRANSPORTATION PLAN

Goals & Objectives Development

Goals & Objectives Development Process

Step 1: Developed Goals based on Public Outreach and LRTP Steering Committee input

Step 2: Organized Goals by 2050 LRTP Themes

Step 3: Developed supporting Objectives by mode

Step 4: Vetted Goals & Objectives against 2045 Goals & Objectives and federal requirements



SMART MAP 2050
 Mobility. Accessibility. Prosperity.
 LONG RANGE TRANSPORTATION PLAN

SMART M.A.P. 50
 Mobility. Accessibility. Prosperity.

Final Questions & Closing Remarks

<https://miamidadetpolrtp2050.com>

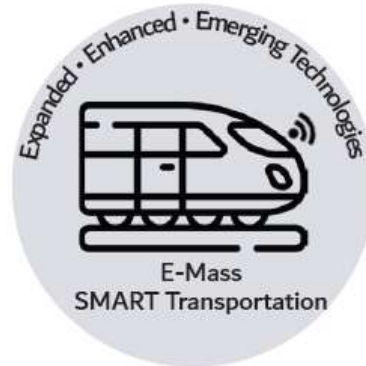
TP
 Miami-Dade Transportation Planning Organization





MIAMI-DADE TRANSPORTATION PLANNING ORGANIZATION
2050 LONG RANGE TRANSPORTATION PLAN
GOALS AND OBJECTIVES

By 2050
Miami-Dade County's
Transportation
System will include:



Goals and objectives related to improving and expanding E-mass transit, which includes transit and related technological advances.



Goals and objectives related to improving and expanding multimodal access to transit and expanding the network of bicycle and pedestrian facilities.



Goals and objectives related to the smooth functioning of the highway system and the flow of freight traffic.

SMART M.A.P. 2050 LRTP Goals & Objectives



MIAMI-DADE TRANSPORTATION PLANNING ORGANIZATION 2050 LONG RANGE TRANSPORTATION PLAN GOALS AND OBJECTIVES

By 2050
Miami-Dade County's
Transportation
System will include:



MOBILITY - The potential and ability to meet daily needs using one or more modes of transportation

Safe, Secure & Reliable All modes and technologies are maintained for safe and reliable operations	<ul style="list-style-type: none"> Increase year over year on-time performance Safe transit facilities 	<ul style="list-style-type: none"> Provide protected, safe first/last mile facilities Advance Vision Zero 	<ul style="list-style-type: none"> Maintain safe railways, ports highways, bridges, and roads Reduce system-wide delay and enhance safety and security
	Connected All modes and technologies create an interconnected network	<ul style="list-style-type: none"> Increase miles of fixed guideway Increase direct connections to destinations 	<ul style="list-style-type: none"> Increase the miles and variety of first last mile connections

ACCESSIBILITY - The ease of reaching and interacting with destinations or activities within a community

Innovative Leverage technology to enhance all modes	<ul style="list-style-type: none"> Prepare for and adopt advanced and intelligent technologies 	<ul style="list-style-type: none"> Create a network of connected bicycle/pedestrian facilities 	<ul style="list-style-type: none"> Prepare for and integrate modes into the existing network
	Climate Resilient All modes and technologies are built to accommodate climate events	<ul style="list-style-type: none"> Complete transition to a clean fleet Increase use of renewable resources 	<ul style="list-style-type: none"> Increase miles of climate adaptive infrastructure

PROSPERITY - The ability of a transportation system to support economic growth, social equity and environmental sustainability

Equitable Restore community connectivity with integrated livable communities design into all major transportation projects	<ul style="list-style-type: none"> Increase accessibility and mobility options for historically disadvantaged populations and communities Equitably distribute funding and projects 	<ul style="list-style-type: none"> Prioritize connectivity and safety of first last mile network Equitably distribute funding and projects 	<ul style="list-style-type: none"> Prioritize travel times reduction Restore community livability and connectivity
	Economically Competitive Encourage land use supportive of all modes, technologies and telecommuting infrastructure	<ul style="list-style-type: none"> Connect regionally Improve housing and employment linkages 	<ul style="list-style-type: none"> Connect seamlessly to jobs at major economic hubs

Contact: Elizabeth Rockwell, Chief Information Officer, at 305-375-1881 or information@mdtpo.org. Scan QR Code or visit www.miamidadepolrtp2050.com | #MiamiDadeIn2050 | #MiamiDadeTPO



The Miami-Dade TPO has adopted a policy that allows that to persons that receive or view, under national single-use, any digital file, or any other data, as provided by the U.S. Copyright Act of 1976 (U.S.C. 107), the U.S. Copyright Act of 1992, the U.S. Copyright Act of 1997, and subsequent amendments and/or their derivatives, the benefits of, or any other rights, to be considered in any other order and program, or activity, in the public interest. This policy is in compliance with the requirements of the Copyright Act (U.S.C.). To request this information, please contact the TPO at 305-375-1881. If you are not a resident of Miami-Dade County, please contact the Miami-Dade TPO by phone at 305-375-1881, email at information@mdtpo.org, or visit www.miamidadepolrtp2050.com.

PROJECTS

Congestion Management, Needs & Scenario Planning



MIAMI-DADE TRANSPORTATION PLANNING ORGANIZATION

LONG RANGE TRANSPORTATION PLAN

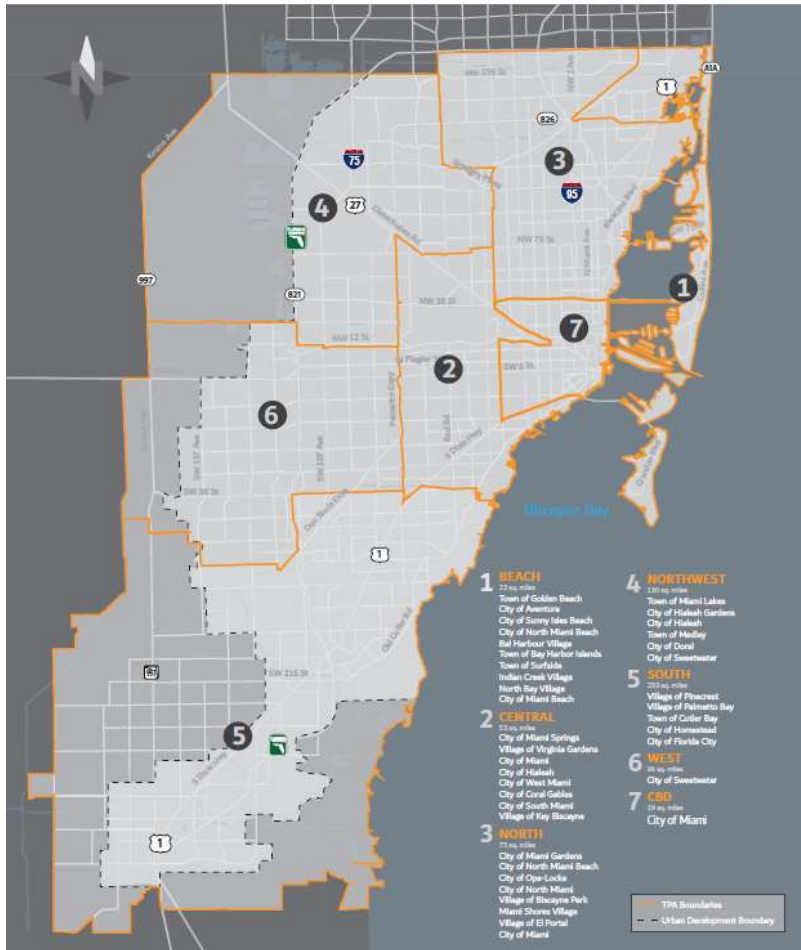


Congestion Management

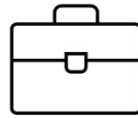


Miami-Dade County

Quick Facts



2.7 Million 2020
3.3 Million 2050



1.4 Million 2020
1.8 Million 2050



AGE⁵
Average Age 40.67
Under 18 552,057 (20.40%)
18 to 65 1,713,268 (63.32%)
Over 65 440,203 (16.27%)



RACE⁵
White 1,783,928 (65.94%)
Black/African American 457,814 (16.92%)
Native American 5,273 (0.19%)
Asian 43,192 (1.60%)
Other 415,321 (15.35%)



ETHNICITY⁵
Hispanic/Latino 1,843,676 (68.14%)
Non-Hispanic/Latino 861,852 (68.14%)



INCOME⁵
2020 Median Household Income \$60,938



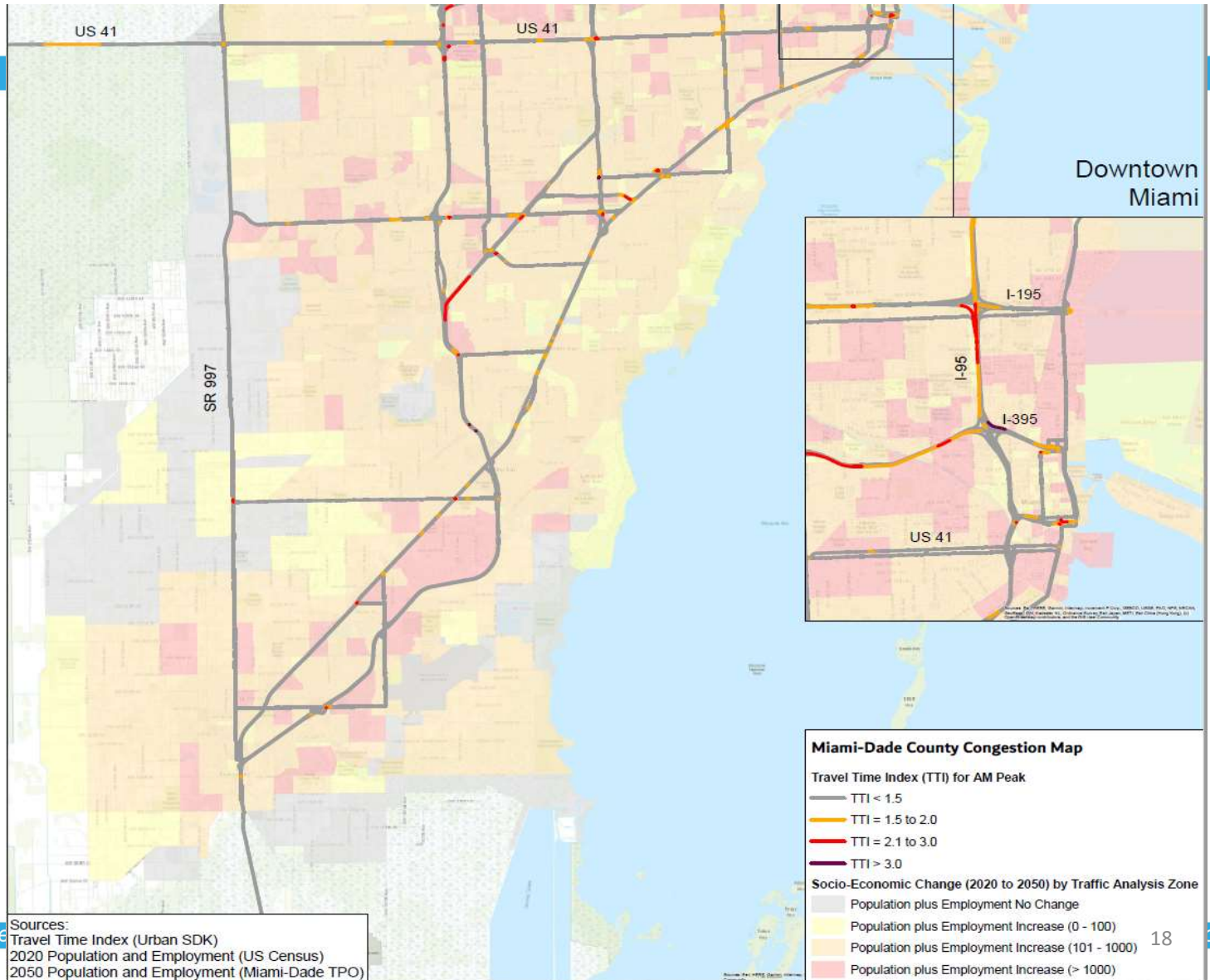
EDUCATION⁵
No High School Diploma 381,899 (17.73%)
High School Diploma 580,492 (26.96%)
Bachelor's Degree 393,167 (18.26%)
Masters or PhD or Professional Degree 221,013 (10.26%)



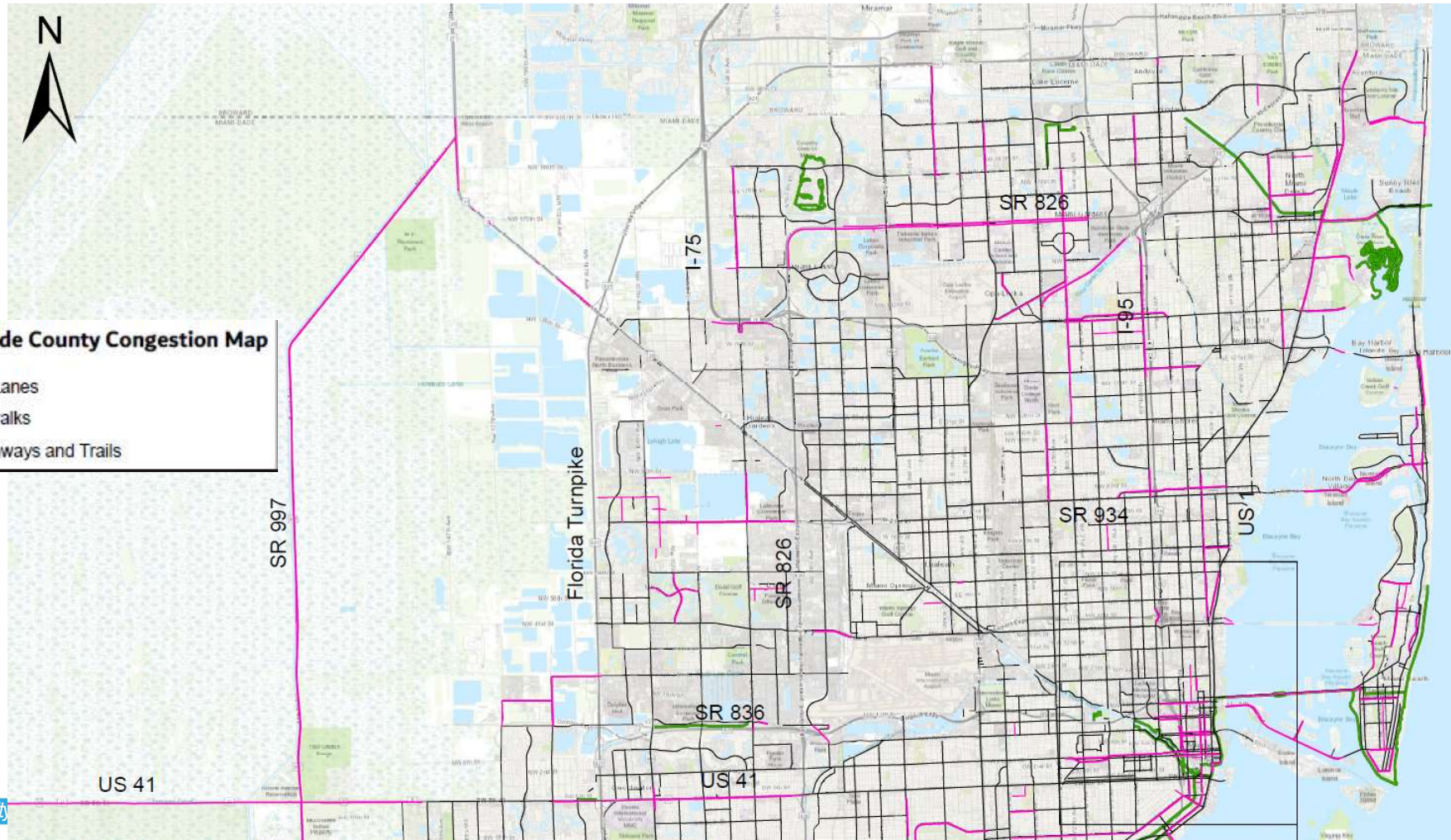
COMMUTE
Average Commute Time⁵ 29.6 minutes
Lane Miles⁶ 19,362 miles
Roadway Miles⁶ 9,375 miles
Zero Car Households⁵ 90,752 (10.06%)

Sources: 2020 US Census and TPO Socioeconomic Forecast Data

Population and Employment Growth & Travel Delay



Multimodal Network Connectivity

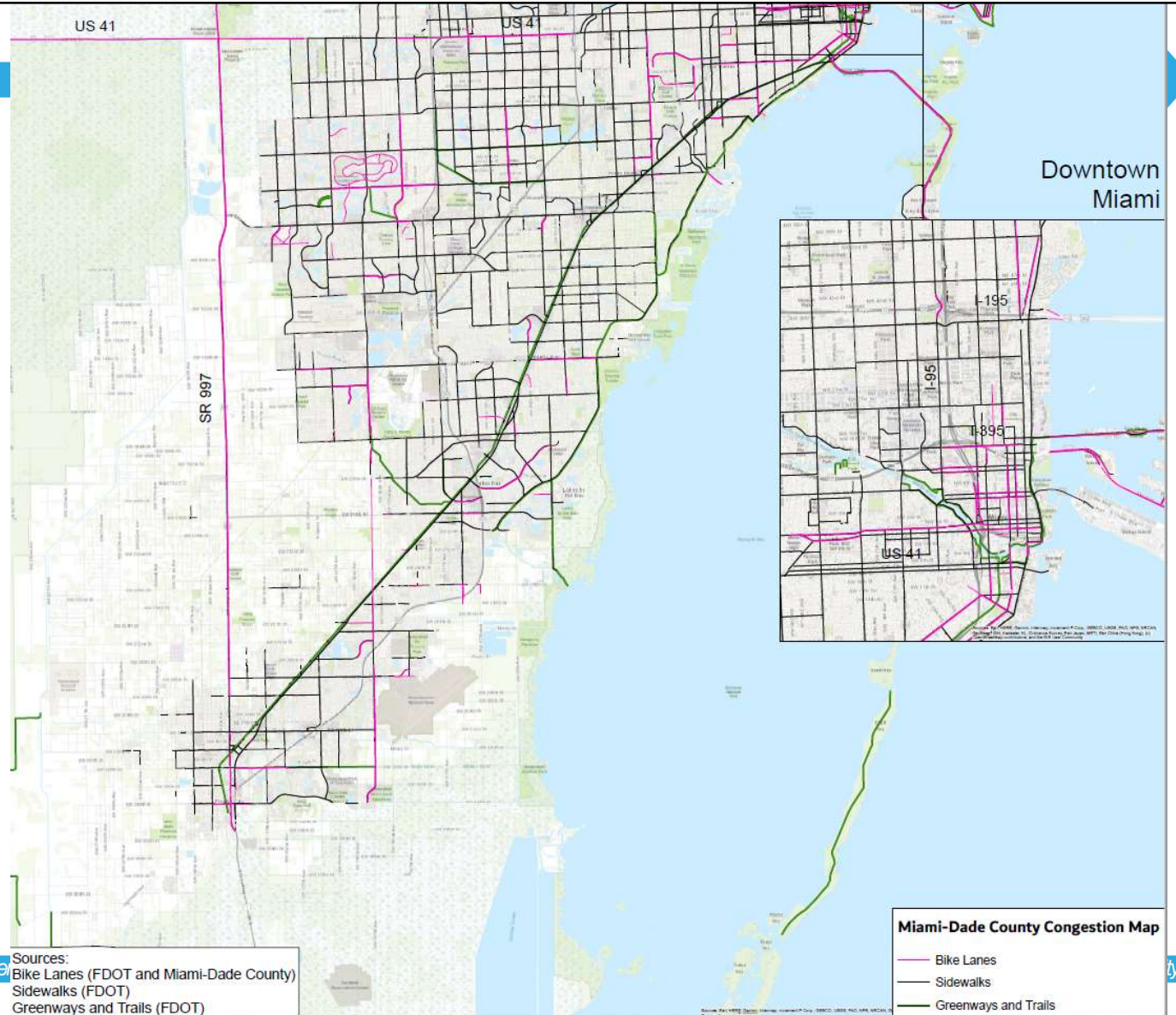


Miami-Dade County Congestion Map

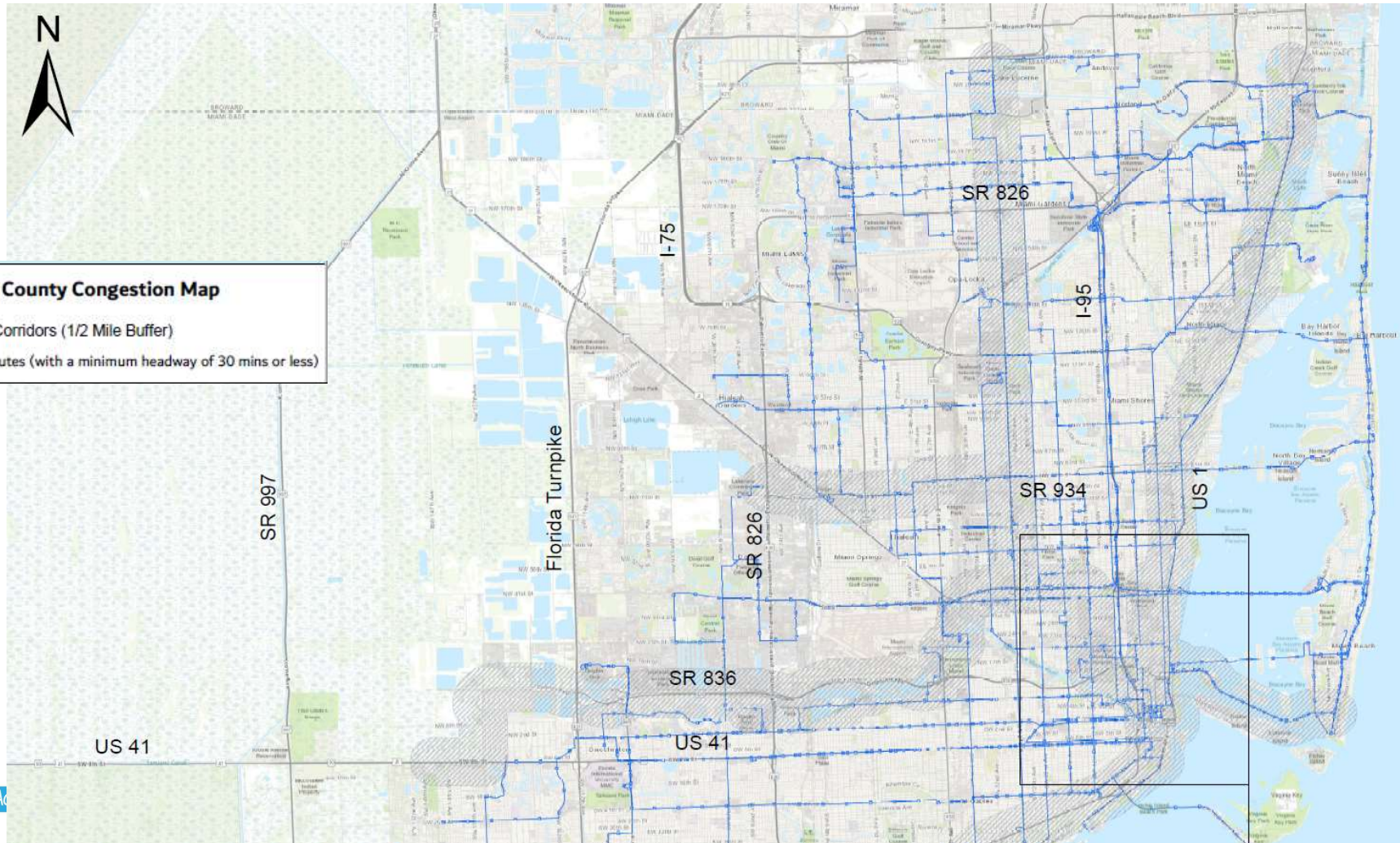
- Bike Lanes
- Sidewalks
- Greenways and Trails



Multimodal Network Connectivity



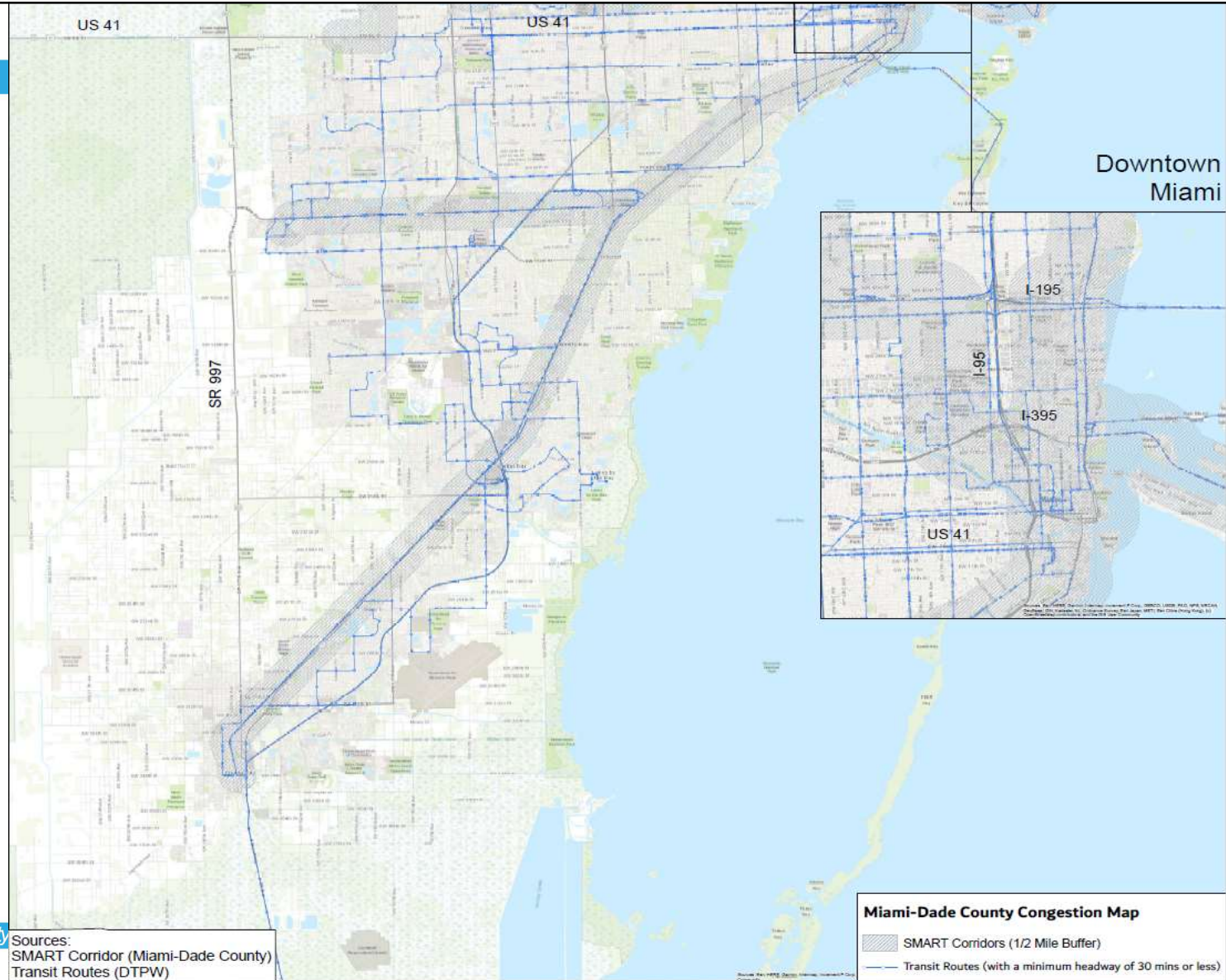
High Frequency Transit



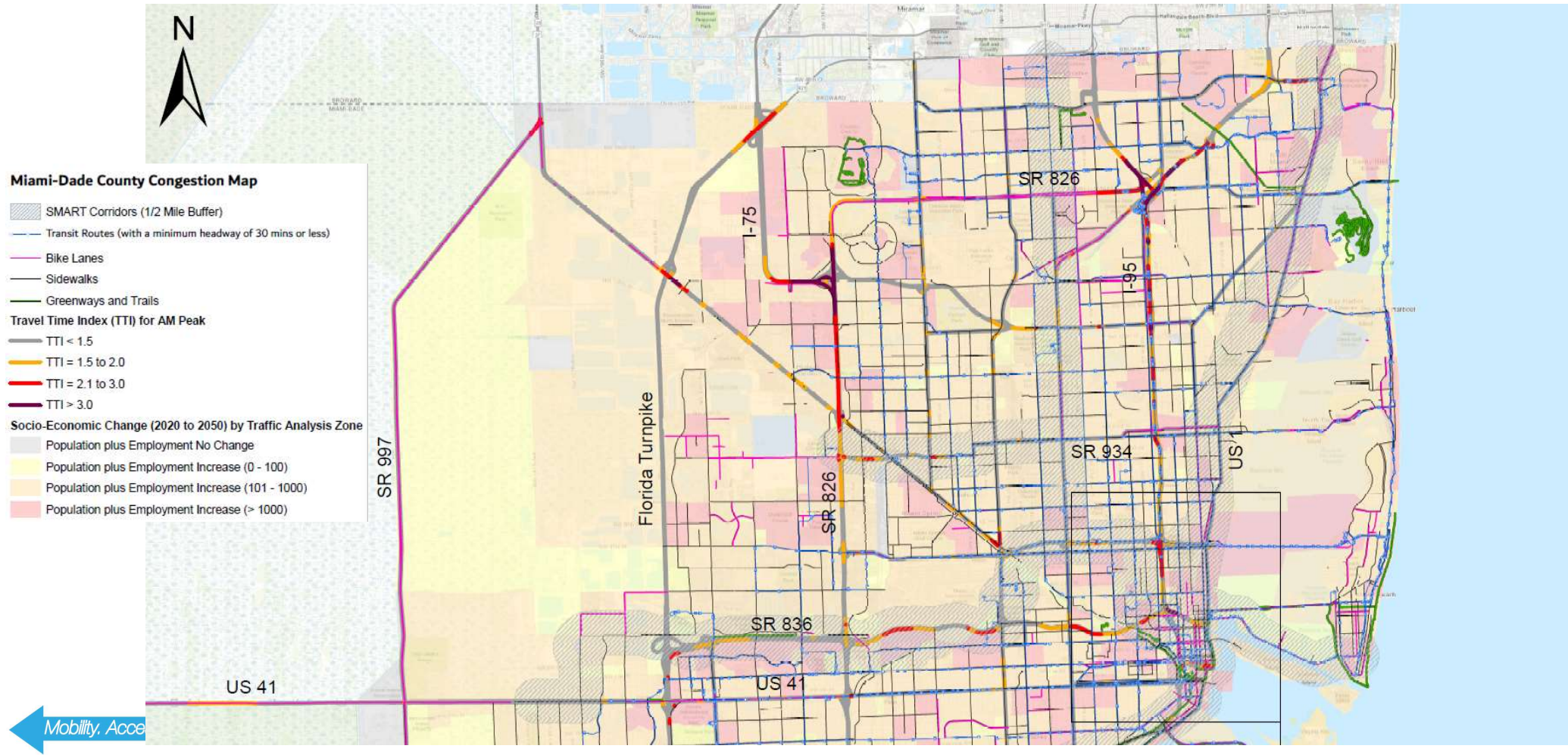
Miami-Dade County Congestion Map

- SMART Corridors (1/2 Mile Buffer)
- Transit Routes (with a minimum headway of 30 mins or less)

High Frequency Transit

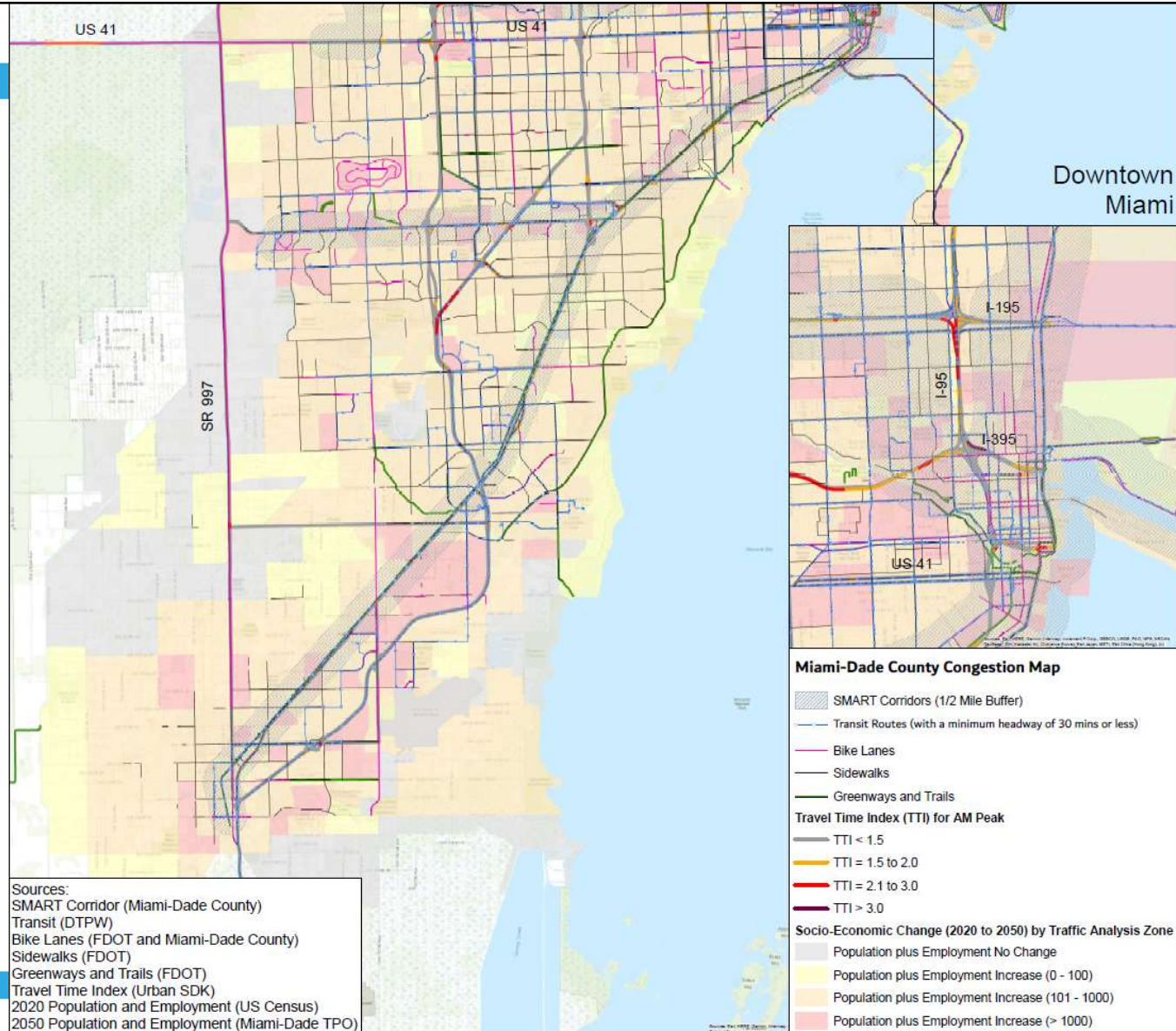


Congestion Management Analysis



Congestion Management Analysis

- Population + Employment Growth
- Multimodal Networks
- High Frequency Transit



The background of the slide is a light blue, semi-transparent aerial 3D rendering of a city. The buildings are represented as white rectangular blocks of varying heights, creating a sense of depth and urban density. A river or canal winds through the city, and various streets and infrastructure are visible. The overall aesthetic is clean and modern.

SMART **2** 
M.A.P. **5** 
Mobility. Accessibility. Prosperity.

Needs Plan

What's in the Needs Plan?



Current and future transportation needs



No financial constraints



Projects feed into the Cost Feasible Plan

Rank which mode of transportation needs the most funding or investment in the future?

- A. Bicycle/Pedestrian Infrastructure
- B. Transit (Buses, trolleys, Metromover, Metrorail, Commuter Passenger Rail)
- C. Airport/Seaport
- D. Freight (Highway & Railroad)



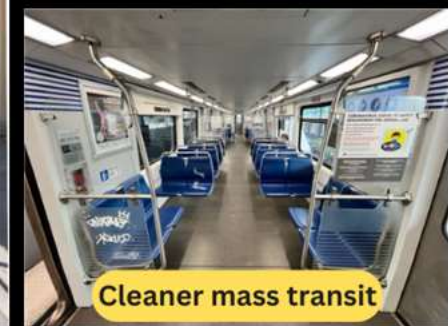
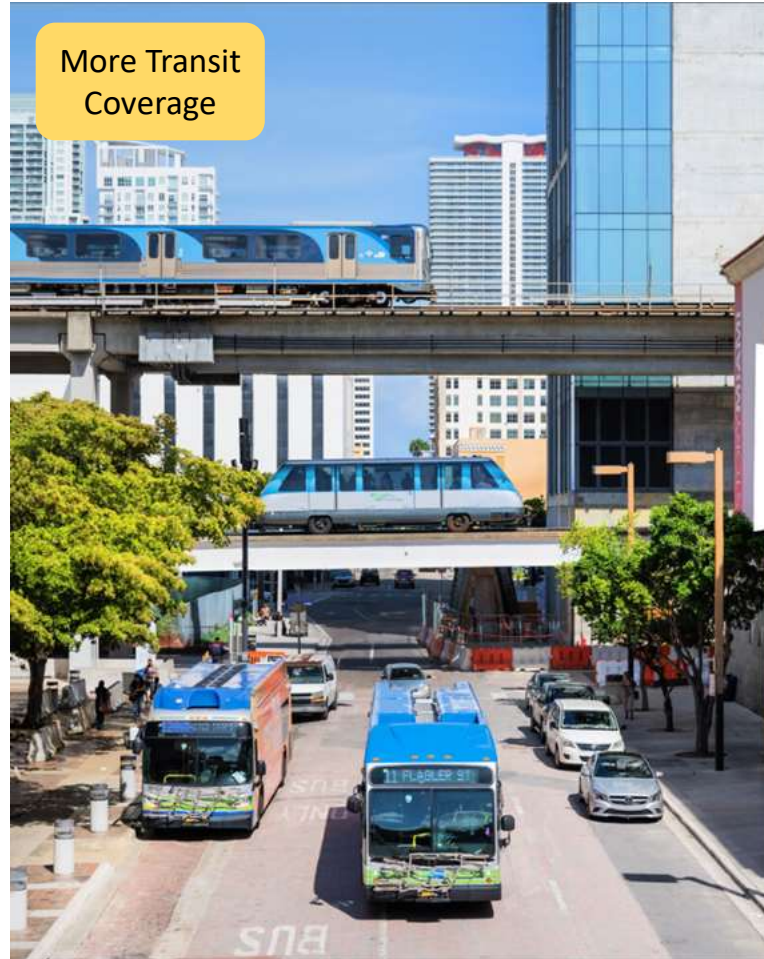
Rank which type of bicycle infrastructure would you like to see implemented the most in Miami-Dade County?

- A. Trails and Greenways
- B. Protected Bicycle Lanes
- C. Conventional Bicycle Lanes
- D. Shared Use Paths



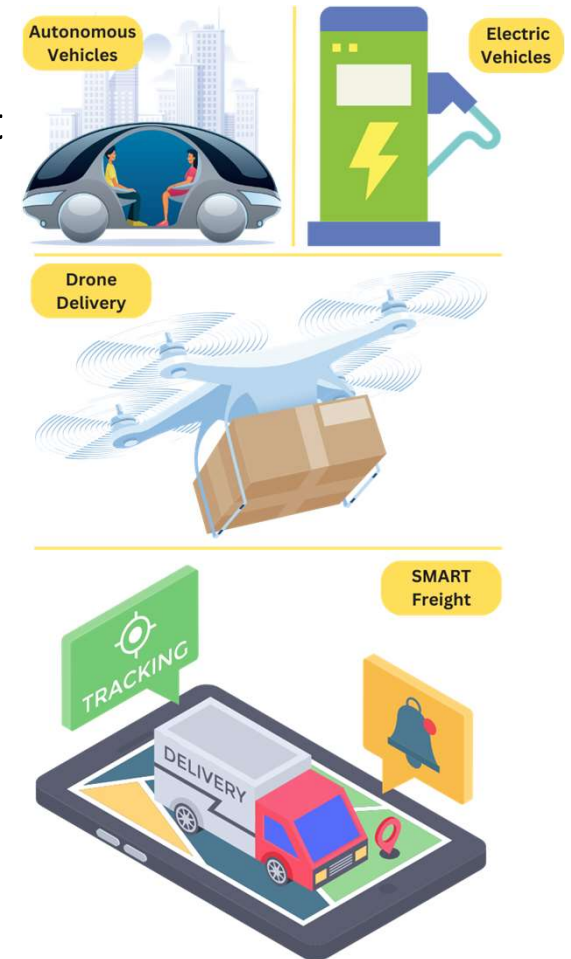
Rank the type of improvements needed for transit to be more accessible?

- A. Improved bus, trolley, Metromover, Metrorail, and Passenger Rail frequency
- B. More transit coverage and better routes
- C. Improved buses and trolley stops/shelters.
- D. Cleaner buses, trolleys, as well as Metromover and Metrorail train cars



Rank which emerging technologies do you think require most attention in the future?

- A. Autonomous Vehicles (AVs)
- B. Electric Vehicles (EVs) and charging stations
- C. Drone deliveries
- D. Smart Freight



Rank the freight improvements are necessary to make Miami-Dade County more competitive?

- A. Truck Parking
- B. Warehousing Districts
- C. Better Railway Access and Connections to Airports/Seaports
- D. Improvements at Railyards and Distribution Centers



Info

Miami-Dade Transportation Planning Organization

We want to hear about your ideas for improving our transportation system.

With this application you can drop a point to mark a location and fill out the form to help us better understand your idea. To add a point, please follow these instructions.

1. Begin by zooming in on the map to the area you would like to mark.
2. Select a **TPO Ideas** type from the **Editor**.
3. Drop your point to mark the map.
4. Fill out the form and select **Create**.

Garmin, SafeGraph, FAO, METI/NASA, USGS, EPA, NPS | Florida Department of Transportation Civil Integrated Management Data Systems Support 605 Suwannee Street Tallahassee, Florida 32399 Powered by Esri

<https://arcg.is/1vSzSq>

An aerial 3D rendering of a city, showing a dense grid of buildings, streets, and a river. The buildings are represented by white and grey rectangular blocks of varying heights. The river flows through the city, and there are some green spaces and parks. The overall scene is a detailed urban landscape.

SMART 2
M.A.P. 5
Mobility. Accessibility. Prosperity.

Scenario Planning

What is Scenario Planning?



Identify key future trends and uncertainties.

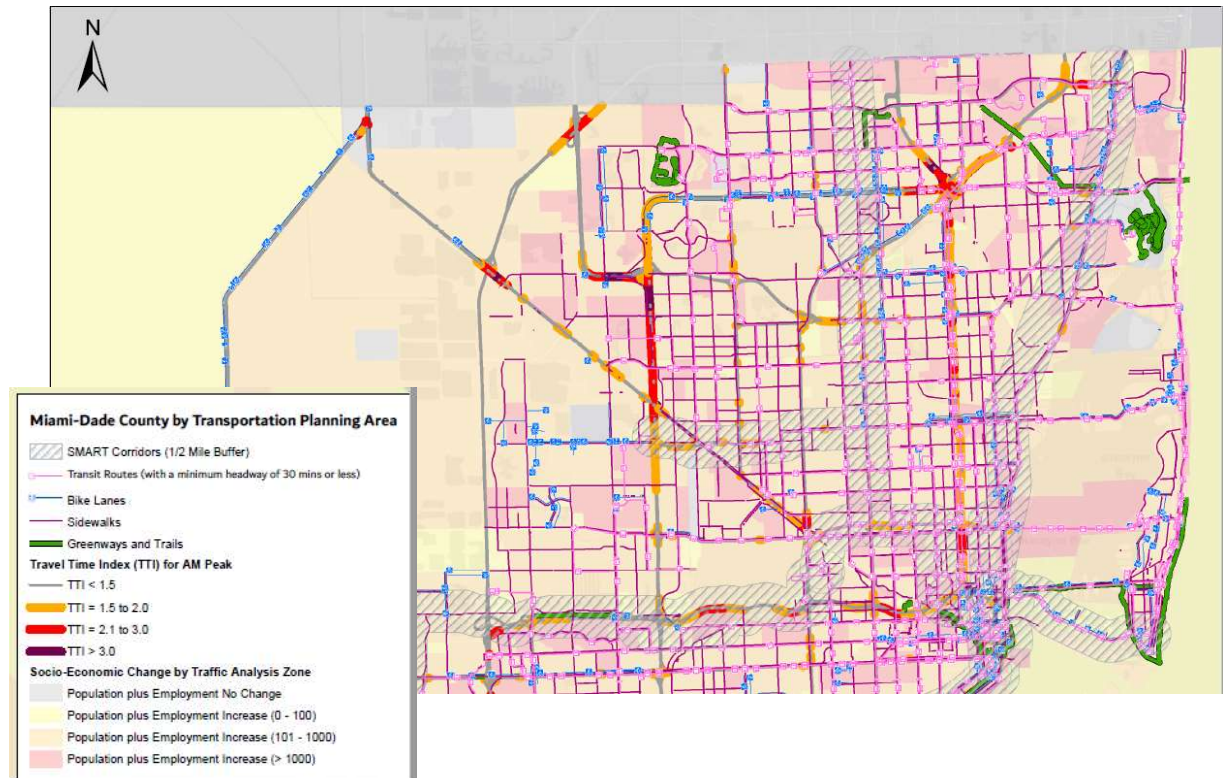
What is Scenario Planning?



Identify key future trends and uncertainties.



Analyze the potential impacts on the transportation system.



What is Scenario Planning?



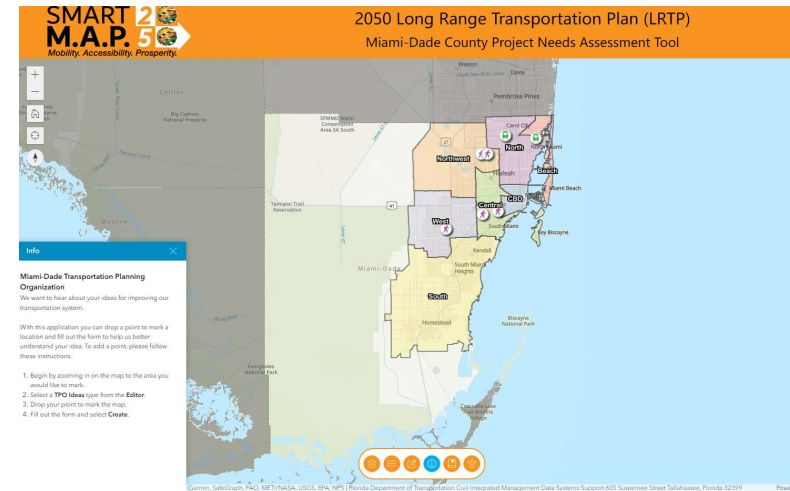
Identify key future trends and uncertainties.



Analyze the potential impacts on the transportation system.



Develop a set of plausible future needs that address these trends and uncertainties.



What is Scenario Planning?



Identify key future trends and uncertainties.



Analyze the potential impacts on the transportation system.



Develop a set of plausible future needs that address these trends and uncertainties.



Identify strategies for adapting to change.



Develop a shared vision for the future.

Overarching Strategies for Miami-Dade's Future

Planning efforts will consider:

- **Equity**
Access for all communities, incomes, ages, and abilities
- **Telework**
Where possible, people will continue to work remotely
- **Infrastructure Vulnerability**
Future affects of sea level rise, extreme heat, etc. on transportation system



Scenario 1: Existing + Committed (E+C)

KEY CONSIDERATIONS:

- In 2050, our economic resources are consistent with forecasted levels.
- We are able to maintain existing facilities plus the projects that have construction funds **committed through 2028** (last year of currently adopted TIP).

Scenario 2: 2045 Cost Feasible

KEY CONSIDERATIONS:

- In 2050, our economic resources are consistent with forecasted levels.
- We can advance the projects committed in the E+C scenario, **and the SMART Program projects listed in the 2045 Cost Feasible Plan.**



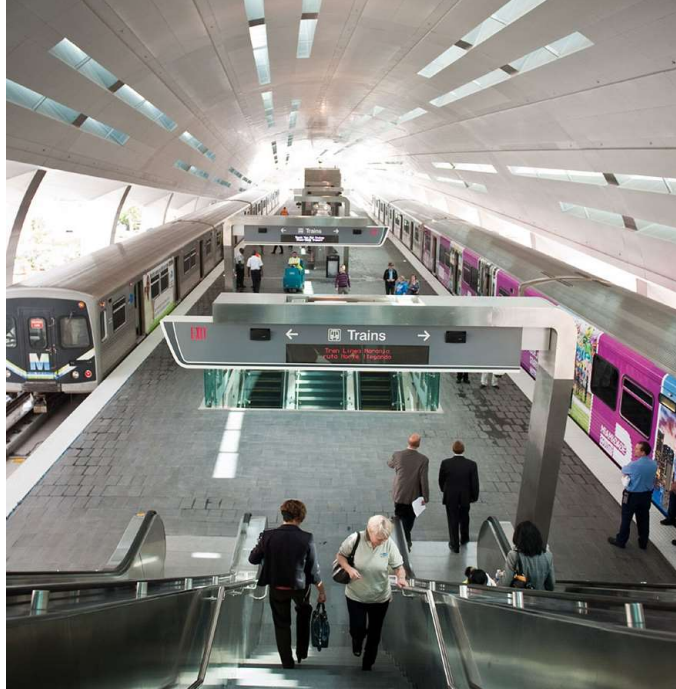


Scenario 3 SMART STEP

KEY CONSIDERATIONS:

- In 2050, our economic resources are consistent with forecasted levels.
- We can advance the projects committed in the E+C scenario, and the SMART Program projects listed in the 2045 Cost Feasible Plan.
- **We can identify and allocate funding to the next generation of SMART STEP projects focusing on the first/last mile.**

Strategic Miami Area Rapid Transit (SMART) Plan



Scenario 4 SMART Plus

KEY CONSIDERATIONS:

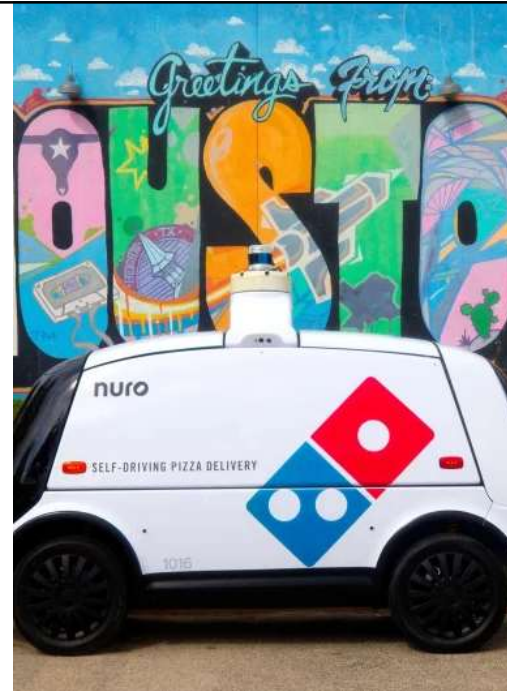
- In 2050, our economic resources are consistent with forecasted levels.
- We can advance the projects committed in the E+C scenario, and the SMART Program projects listed in the 2045 Cost Feasible Plan.
- **We can identify and allocate funding to the next generation of SMART Plus projects, focusing on e-mass transit.**



Scenario 5 SMART Freight

KEY CONSIDERATIONS:

- In 2050, our economic resources are consistent with forecasted levels.
- We can advance the projects committed in the E+C scenario, and the SMART Program projects listed in the 2045 Cost Feasible Plan.
- **We can identify and allocate funding to SMART Freight projects focusing on safe roads and expedited freight delivery.**



Scenario 6 SMART Tech

KEY CONSIDERATIONS:

- In 2050, our economic resources are consistent with forecasted levels.
- We can advance the projects committed in the E+C scenario, and the SMART Program projects listed in the 2045 Cost Feasible Plan.
- **We can identify and allocate funding to new SMART Tech projects focusing on implementation of innovative transportation technology.**



SOUTHEAST FLORIDA  **2050**
REGIONAL TRANSPORTATION PLAN
Miami-Dade • Broward • Palm Beach

SEFTC MISSION

To coordinate regional transportation goals, activities, and investment decisions that support the economic health of the region and quality of life.

SEFTC VISION


A seamless, multimodal transportation system that serves and benefits the region.

THREE COUNTIES, ONE TRAVELING PUBLIC



 PALM BEACH

 BROWARD

 MIAMI-DADE

PAST ADOPTED PLANS



Adopted 2010



Adopted 2015



Adopted 2020

2050 RTP VISION

**ADVANCING
THE
REGION.**

A RTP that **addresses the changing needs** of our region including **emerging technologies, resilient infrastructure, ensuring transit supportive land uses, and more transportation options** providing access to desired destinations.

This Plan will summarize **regional needs**, gather support for **adopted policies**, and refine the **blueprint for implementation**. The RTP advocates for a **flexible and equitable reallocation of funds** to implement the priorities of the region.

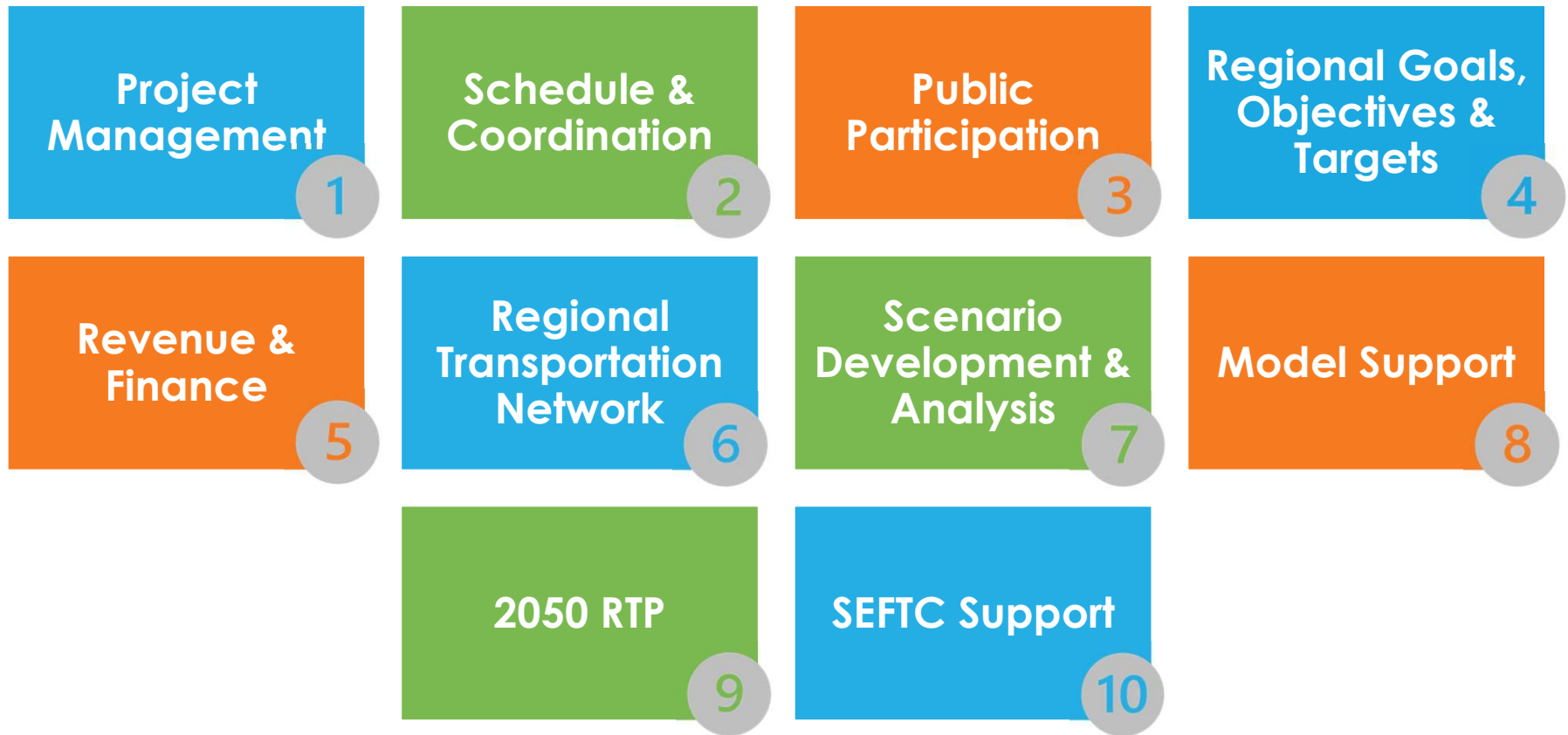
PARTICIPATING MPOS / FUNDING AGENCIES



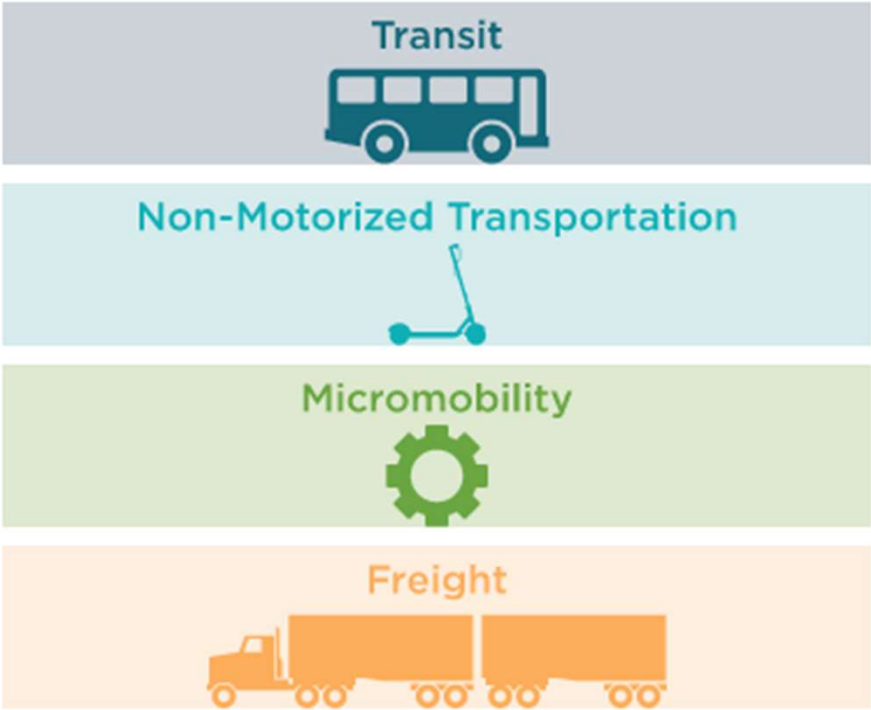
Other Advisory Agencies

- Florida Department of Transportation (FDOT) Districts 4 and 6
- South Florida and Treasure Coast Regional Planning Councils (SFRPC & TCRPC)
- South Florida Regional Transportation Authority (SFRTA)
- Miami-Dade County Department of Transportation & Public Works (DTPW)
- Broward County Transit (BCT)
- Palm Tran

SCOPE OF WORK



Adoption Anticipated Summer 2025



Now through Summer 2025



You Are Cordially Invited!



Miami-Dade Transportation Planning Organization
SMART M.A.P. 2050 Long Range Transportation Plan (LRTP)
Community Workshops

Virtual Community Workshop

Tuesday, September 26, 2023 | 11:00 AM-12:00 PM
https://tinyurl.com/2050LRTPVOE2

In-Person Community Workshops

Various dates and locations | 5:00 PM - 7:00 PM
RSVP is Encouraged: https://tinyurl.com/2050LRTPEvents1
Please see TPA map on the other side for locations.

Central

Tuesday, October 3, 2023
Coral Gables Branch Library, 3443 Segovia Street, Coral Gables, FL 33134

North

Thursday, October 5, 2023
North Dade Regional Library, 2455 NW 183rd Street, Miami Gardens, FL 33056

South

Thursday, October 12, 2023
South Dade Regional Library, 10750 SW 211th Street, Cutler Bay, FL 33189

Beach

Tuesday, October 17, 2023
Gateway Park, 151 Sunny Isles Boulevard, Sunny Isles, FL 33160

West

Wednesday, October 18, 2023
Westchester Regional Library, 9445 Coral Way, Miami, FL 33165

Northwest

Thursday, October 19, 2023
Wilde Community Center, 1701 W 53rd Terrace, Hialeah, FL 33012

Central Business District (CBD)

Thursday, November 2, 2023
Overtown Performing Arts Center, 1074 NW 3rd Avenue, Miami, FL 33136

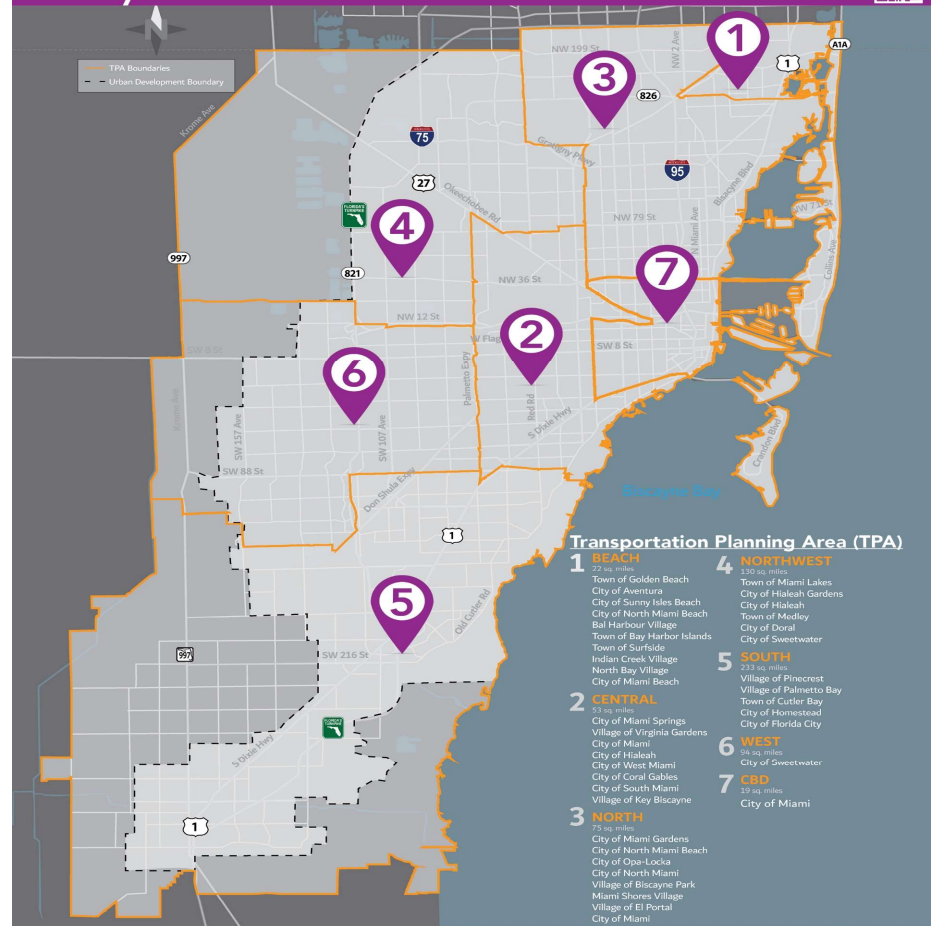
Public participation is solicited without regard to race, color, national origin, age, sex, religion, disability, or family status. Persons who require special accommodations under the American with Disabilities Act (ADA) or persons who require translation services, should contact Paul Chance, Public Involvement Officer, at 305-375-1888 or information@mdtpo.org at least seven days prior to the public meeting.



#MiamiDadeIn2050 #MiamiDadeTPO | www.miamidadetpolrtp2050.com



MIAMI-DADE TRANSPORTATION PLANNING ORGANIZATION
2050 LONG RANGE TRANSPORTATION PLAN - COMMUNITY WORKSHOPS



Transportation Planning Area (TPA)

- 1 BEACH 27 sq. miles
Town of Golden Beach
City of Aventura
City of Sunny Isles Beach
City of North Miami Beach
Bal Harbour Village
Town of Bay Harbor Islands
Town of Surfside
Indian Creek Village
North Bay Village
City of Miami Beach
2 CENTRAL 53 sq. miles
Village of Virginia Gardens
City of Miami
City of Hialeah
City of West Miami
City of Coral Gables
City of South Miami
Village of Key Biscayne
3 NORTH 23 sq. miles
City of Miami Gardens
City of North Miami Beach
City of Opa-Locka
City of North Miami
Village of Biscayne Park
Miami Shores Village
Village of El Portal
City of Miami
4 NORTHWEST 120 sq. miles
Town of Miami Lakes
City of Hialeah Gardens
City of Hialeah
Town of Medley
City of Doral
City of Sweetwater
5 SOUTH 233 sq. miles
Village of Pincrest
Village of Palmetto Bay
Town of Cutler Bay
City of Homestead
City of Florida City
6 WEST 24 sq. miles
City of Sweetwater
7 CBD 19 sq. miles
City of Miami



#MiamiDadeIn2050 #MiamiDadeTPO | www.miamidadetpolrtp2050.com

2050 SMART M.A.P. MANAGEMENT TEAM



Franchesca Taylor, AICP
305-375-1738
Franchesca.Taylor@mdtpo.gov



Christopher Rosenberg
305-375-1817
Christopher.Rosenberg@mdtpo.org



Elizabeth Rockwell
305-375-1881
Elizabeth.Rockwell@mdtpo.gov





STAY INVOLVED & LEARN MORE AT

<https://miamidadetpolrtp2050.com>